



Delivering Excellence, Building Solutions.

**STRENGTH
TRAPEZOIDAL**

TH SPANDEX



TECHNICAL SPECIFICATIONS

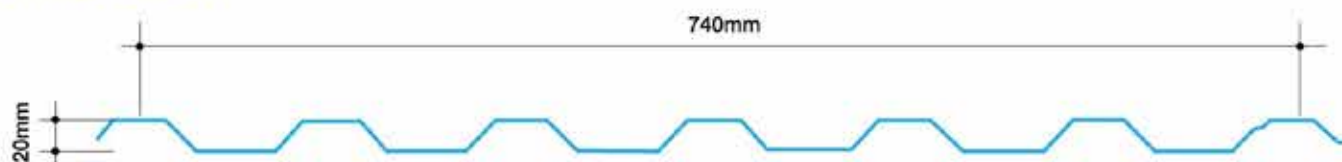
Thickness						
BMT in mm	0.35		0.42		0.48	
TCT in mm	0.40		0.47		0.53	
Effective Coverage Width (mm)	740		740		740	
Rib High (mm)	20		20		20	
Tolerance						
Effective cover width	±3mm					
Mass	Zincalume	Clean Colorbond	Zincalume	Clean Colorbond	Zincalume	Clean Colorbond
Mass per unit area kg/m ²	3.60	3.67	4.28	4.35	4.86	4.94
Mass per unit length kg/m	2.67	2.72	3.17	3.22	3.60	3.65
Maximum Allowable Support Spacings Roof Applications						
Single span (mm)	1400		1500		1600	
End span (mm)	1400		1500		1600	
Internal Span (mm)	1600		1700		1800	
Overhang (mm)	100		100		150	
Wall applications						
Single span (mm)	1500		1600		1700	
End span (mm)	1500		1600		1700	
Internal Span (mm)	1700		1800		1900	
Overhang (mm)	150		150		200	
Minimum Pitch						
Sheet Length	3'					
Grade of steel	G550 (550N/mm ² yield strength)					
Coating Class (min)	AZ150					

WATER RUN OFF

MAXIMUM ROOF LENGTHS FOR DRAINAGE MEASURED FROM RIDGE TO GUTTER (M)

Slope of Degree (mm/1m)	3°	5°	7°	10°	12°
250	24	31	37	44	48
300	20	26	31	36	40
350	17	22	26	31	34
400	15	20	23	27	30

DIMENSION



SAMPLES OF SPECIFICATION

TH SPANDEX 0.47mm Total Coating Thickness (TCT) roofing sheets in AZ150 G550 **Clean Colorbond®** XRW Steel (Colour TBA) pierced fastened with self drilling screws with hex, washer head and EPDM seal - Complying to AS3566 Class 3 minimum; fixed to metal purlins.

TH SPANDEX



TH SPANDEX is a modern and trapezoidal profile which combines strength with lightness, rigidity and economy.

TH SPANDEX was originally designed as a strong attractive roofing material for industrial and commercial construction, however **TH SPANDEX** has proved equally popular for home and public buildings, underlining its versatility and pleasing appearance.

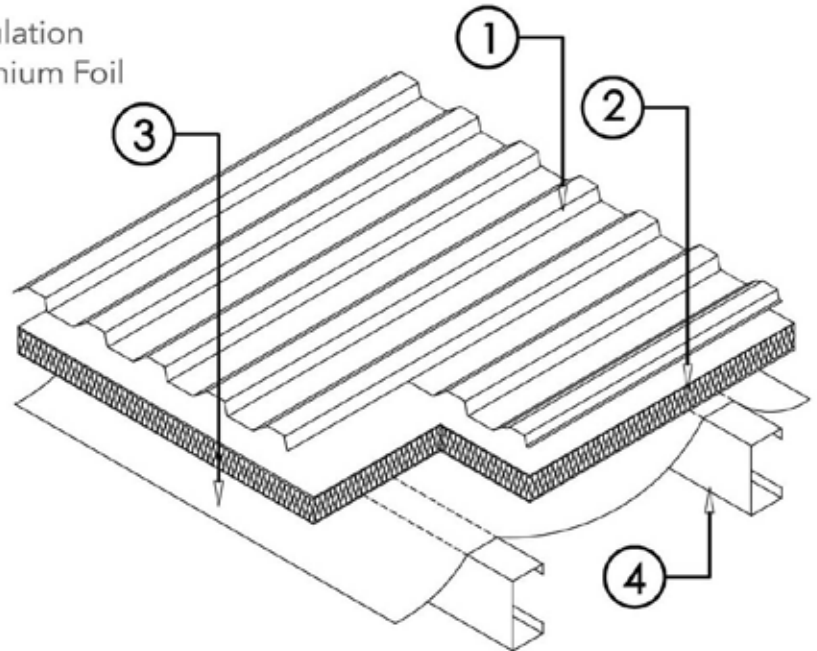
- Highly serviceable roofing and walling cladding
- Trapezoidal ribs can be run vertical or horizontally
- Conformity to international building codes and standard
- Speedy fixing and lower installation cost
- A special anti-capillary groove



TYPICAL ROOF BUILD UP

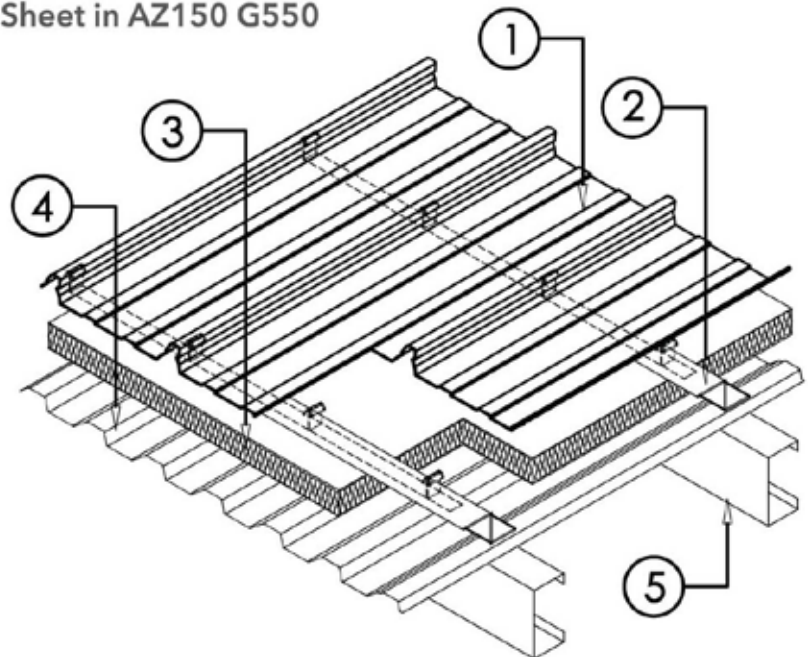
TH SPANDEX SINGLE SKIN ROOF

1. TH SPANDEX 0.42mm BMT Roofing Sheet in AZ150 G550 Clean Colorbond® XRW Steel
2. 1 Layer of 50mm thk Mineral Wool Insulation
3. 1 Layer of Double Sided Woven Aluminium Foil
4. TH C-Purlin



TH CLIP LOCK OPTIMA 730 DOUBLE SKIN ROOF

1. TH Clip Lock Optima 730 0.48mm BMT Roofing Sheet in AZ150 G550 Clean Colorbond® XRW Steel c/w TH CL73 Fixing Clips
2. 1 Layer of 1mm thk GI Zed-Spacer
2. 1 Layer of 50mm thk Mineral Wool Insulation
4. TH SPANDEX 0.42mm BMT Roofing Sheet in AZ150 G550 Zinalume® Steel
5. TH C-Purlin



METHOD STATEMENT AND GENERAL NOTES

WALKING ON ROOFS

Generally, keep your weight evenly distributed over the soles of your feet to avoid concentrating your weight on either heels or toes. Always wear smooth softsoled shoes; avoid ribbed soles that pick up and hold small stones, swarf and other objects.

WHEN WALKING ACROSS THE WIDTH OF THE ROOF, WALK OVER, OR CLOSE TO, THE ROOF SUPPORTS.

Fasteners Without Insulation		
	Fixing To Steel	Fixing To Timber
Crest Fixed	Self Drilling Screws With Hex. Washer-Head & EPDM Seal, 12 x 45mm	Self Drilling Screws With Hex. Washer-Head & EPDM Seal, 10 x 50mm
Valley Fixed	Self Drilling Screws With Hex. Washer-Head & EPDM Seal, 12 x 20mm	Self Drilling Screws With Hex. Washer-Head & EPDM Seal, 10 x 25mm
Side Lap & Accessories	Self Drilling Screws With Hex. Washer-Head & EPDM Seal, 12 x 20mm	Self Drilling Screws With Hex. Washer-Head & EPDM Seal, 10 x 20mm

FASTENERS

TH SPANDEX requires 5 fasteners per sheet per support as shown below. Fasteners should comply to AS3566, Class 3 and Class 4.

Side-laps

The edge of TH SPANDEX with the anti-capillary groove is always the underlap (see figures on this page). It is generally considered good practice to use fasteners along side-laps however, when cladding is supported as indicated in Maximum Support Spacings, side-lap fasteners are not usually needed for strength.

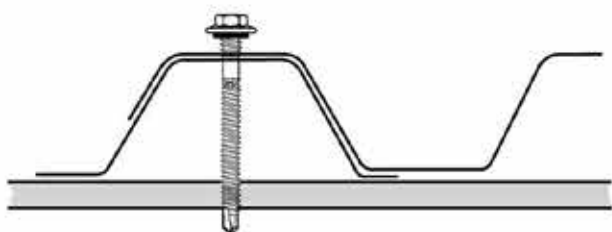
End lapping

End-laps are not usually necessary because TH SPANDEX is available in long lengths.

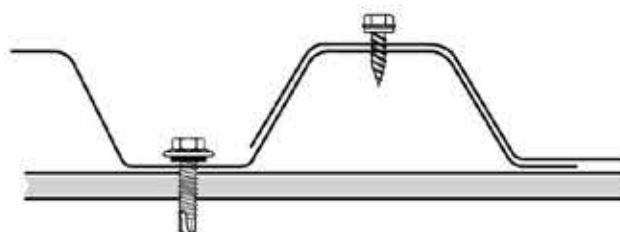
If you want end-laps, seek advice from our information line on the sequence of laying and the amount of overlap.

Ends of sheets

It is usual to allow roof sheets to overlap into gutters by about 50mm. If the roof pitch is less than 25° or extreme weather is expected, the valleys of sheets should be turned-down at lower ends, and turned-up at upper ends by about 80°.



Crest fixing for roof or walls



Valley fixing for walls only



ZINCALUME® steel and Clean COLORBOND® steel

Strong brands, quality materials

Thung Hing Products are manufactured from high quality zincalme steel and clean colorbond steel, which and leading brands with a wide range of applications. These products have been used with striking effect by leading architects to create the latest in modern building designs, through to classic roofing styles for all projects.

Zincalume®

ZINCALUME® steel is a premium metallic coated steel product that is composed of 55% aluminium, 43.5% zinc and 1.5% silicon. The zinc/aluminium alloy coating on ZINCALUME® steel imparts corrosion resistance of up to four times the life of galvanised steel.

ZINCALUME® steel is backed by a material warranty of up to 25 years*

Typical applications featuring ZINCALUME® steel include roofing, wall cladding and gutters.

Product Attributes

- Durable and strong.
- Superior corrosion resistance and has an excellent combination of physical and cut edge protection.
- Lightweight for easy handling.
- Thermally efficient roofing.
- Excellent flexibility in design, can be curved, for truly individual designs.
- Weather tight and secure when installed to manufacturer's specifications.
- Clear resin coating resists scuffing and handling marks.

*Warranty terms and conditions apply

clean Colorbond®

Clean COLORBOND® pre-painted steel combines the superior strength of steel, the corrosion resistance and protection of a zinc/aluminium alloy (ZINCALUME® steel) coating that maintain its long lasting beauty with excellent colour retention.

It has been developed as a "Defence System Against Tropical Staining." Its unique oven-cured paint system prevents surface staining common to tropical environments caused mainly by temperature, moisture and air-borne contaminants.

Clean COLORBOND® steel is backed by a material warranty of up to 25 years*

Product Attributes

- Available in a range of attractive colours.
- The zinc/aluminium alloy coating on ZINCALUME® steel, plus the oven-baked, prepainted finish on Clean COLORBOND® steel provide superior corrosion resistance for long life.
- Thermally efficient. Roofs made from Clean COLORBOND® steel absorb less heat, thus cools very quickly.
- Light weight compared to concrete and clay tiles (on a per area basis) - reduced load on supporting structures.
- Excellent flexibility in design, can be curved, for truly individual designs.
- Flexibility of design allows for both traditional straight roof sheeting as well as innovative curved roofing designs.
- Resists cracking, chipping and peeling.

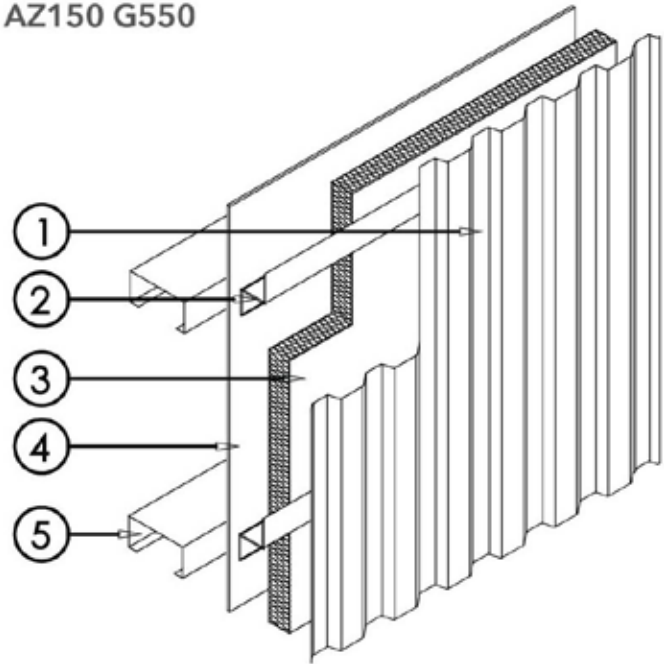
LEAD, COPPER and STAINLESS STEEL are not compatible with Clean COLORBOND® steel and ZINCALUME® steel. Direct contact should therefore, be avoided. Where inside condensation conditions are likely, coated steel girts should be used so that any ZINCALUME® steel to bare steel contact is avoided.

Stainless steel fasteners are not recommended for ZINCALUME® and Clean COLORBOND® steel.

TYPICAL WALL BUILD UP

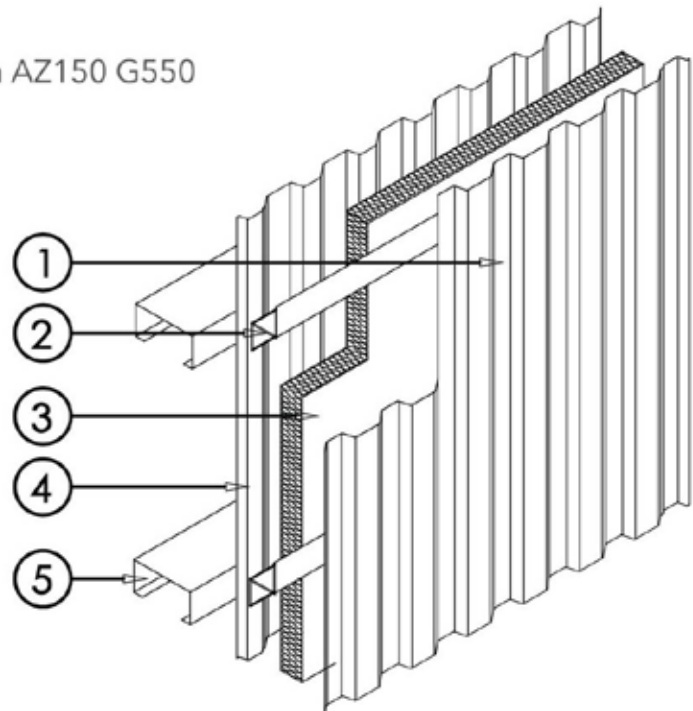
TH SPANDEX SINGLE SKIN ROOF

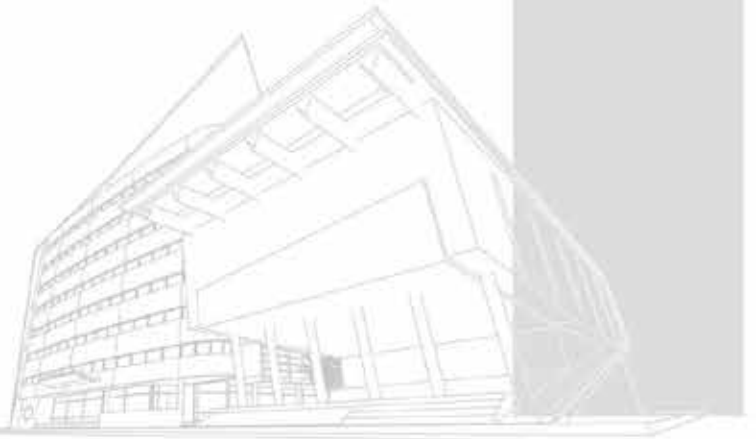
1. TH SPANDEX 0.42mm BMT Cladding Sheet in AZ150 G550
Clean Colorbond® XRW Steel
2. 1 Layer of 1mm thk GI ZED-Spacer
3. 1 Layer of 50mm thk Mineral Wool Insulation
4. 1 Layer of 6mm Cemboard
5. TH C-Purlin



TH SPANDEX DOUBLE SKIN WALL CLADDING

1. TH SPANDEX 0.42mm BMT Roofing Sheet in AZ150 G550
Clean Colorbond® XRW Steel
2. 1 Layer of 1mm thk GI ZED-Spacer
3. 1 Layer of 50mm thk Mineral Wool Insulation
4. TH SPANDEX 0.42mm BMT Cladding Sheet in AZ150 G550
Zincalume® Steel
5. TH C-Purlin





CENTRAL REGION

SELANGOR DARUL EHSAN :
Lot P. T. 1354, Jalan Kesidang 5,
Kaw. Industri Sg. Choh,
48000 Rawang,
Selangor Darul Ehsan, Malaysia
Tel : +603-6099 9999 / 9988
Fax : +603-6099 9922 / 9933

NORTHERN REGION

KEDAH DARUL AMAN :
No. E2, Jalan Cendana 4/5,
Kaw. Perindustrian Cendana,
08000 Sungai Petani,
Kedah Darul Aman, Malaysia
Tel : +604-430 0321(HL)
+604-430 4335 / 4568
Fax : +604-430 4393 / 4348 / 4849

PERAK DARUL RIDZUAN :
108 & 108A, Pekeliling Dataran
Kledang, Taman Rasi Jaya. 31450.
Menglembu. Ipoh.
Perak Darul Ridzuan, Malaysia.
Tel : +605-2811 844 / 2821 844
Fax : +605-2820 844

SOUTHERN REGION

JOHOR DARUL TAKZIM :
Lot 4452, Pt. Kampung
Abdul Rahman,
82200 Benut, Pontian,
Johor Darul Takzim, Malaysia
Tel : +607-690 9926 / 9929
Fax : +607-690 9928

EAST COAST

KELANTAN DARUL NAIM :
Lot 1493, Kaw. Perindustrian Pengkalan Chepa II,
Seksyen 44, Mukim Panchor, Daerah Kemumin,
16100 Kota Bharu, Kelantan Darul Naim, Malaysia
Tel : +609-774 1127 / 1128
Fax : +609-609-774 1130 / 1131



THUNG HING INDUSTRIAL TRADING SDN BHD (264902-P)

The information and illustration contained herein are for guidance only. Care has been taken to ensure all data and information herein is factual and numerical values are accurate at the time of publication. However, any or all technical specifications, information and dimensions are nominal and provisional; they are subjected to change and variations in accordance with market conditions at the date of factual supply. No representation is made or to be implied as to the data and information herein. THUNG HING GROUP, and its subsidiary and associate companies shall not be responsible for any errors in or misrepresentation of the information contained in this brochure or its use. THUNG HING GROUP and its subsidiary and associate companies reserve the right to alter any or all specifications as deemed fit and necessary without prior notice. Copyright © 2019 THUNG HING GROUP

Visit Us At:
THUNG HING GROUP

